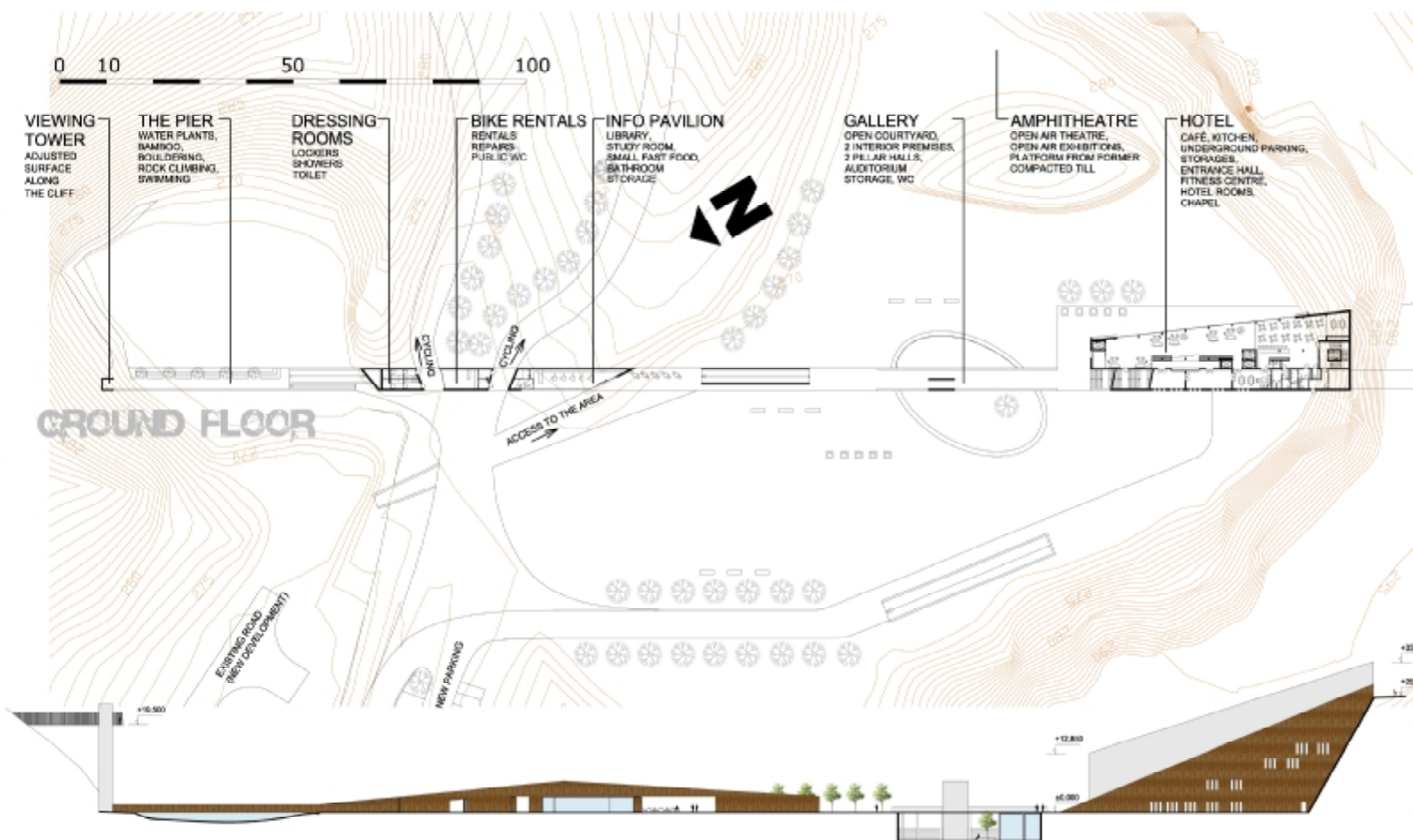
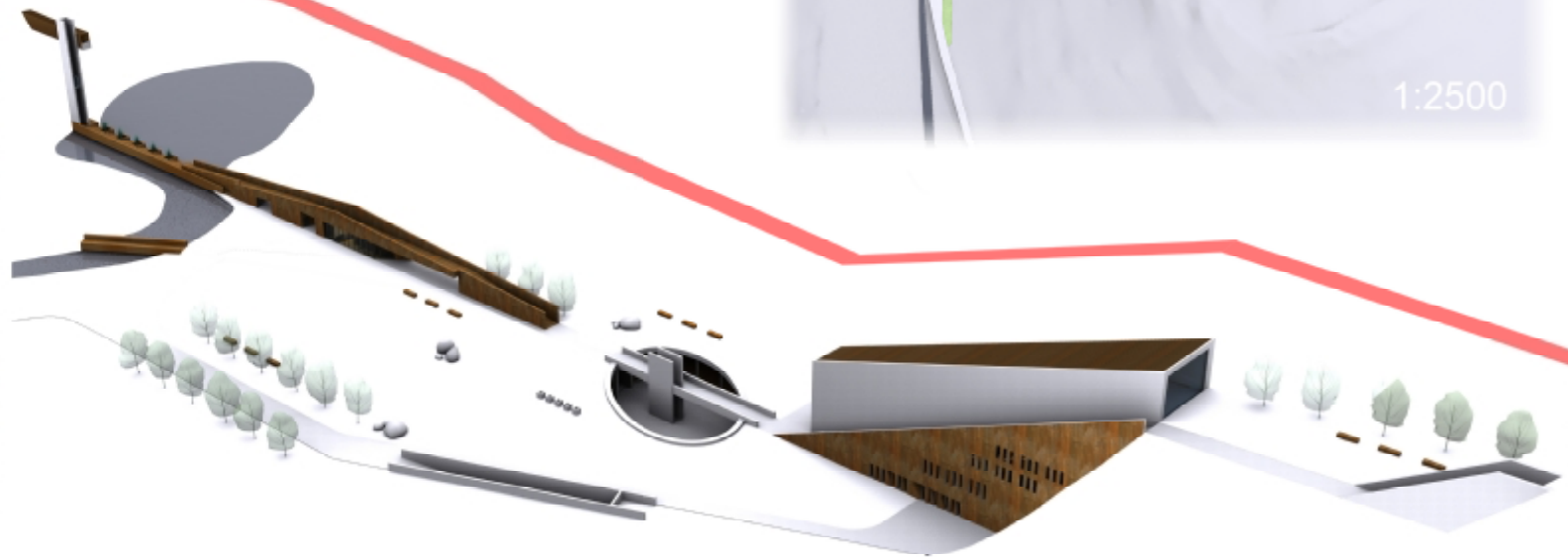
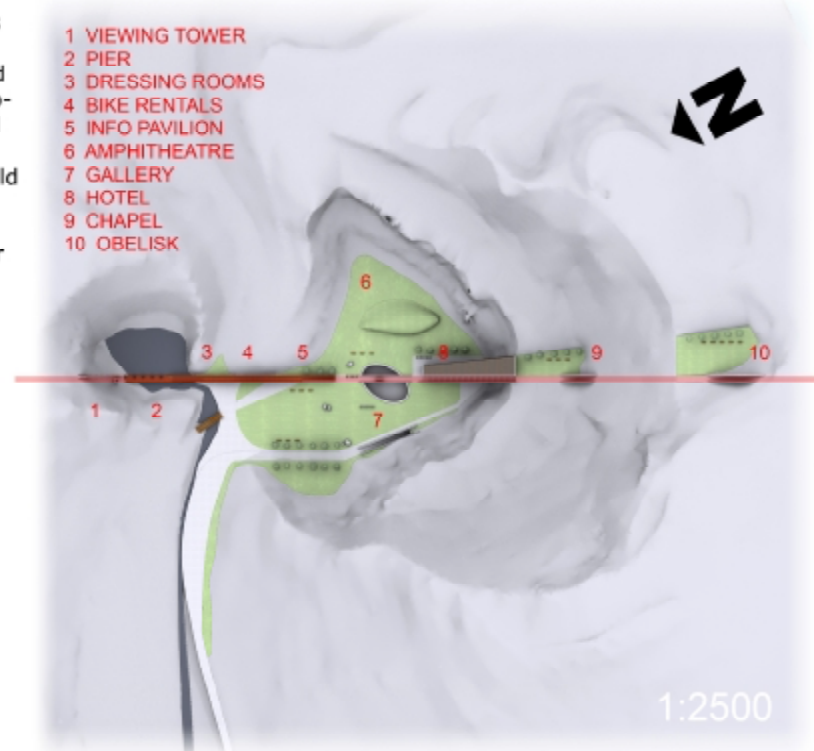


FOCUS

The aim of this project is to increase cultural and leisure activities in this area. Outdoor sport is particularly suited to this area. But what kind of sport are we looking for? If interest was only focused on extreme sports such as base jumping, cliff diving or rock climbing the quarries would become an amusement park, a Disneyland which would attract only one sort of people. This homogeneity would kill the spirit of the place. Therefore the new program should encourage local economics and ecology. It should attract visitors for something they can find nowhere else but here. Thus only a selected group of sports would be catered for in order to balance the program with the culture and spirituality of this place. A certain poetry is present in every landscape and the Genius loci of this place would be revealed. Among the selected functions could be a natural amphitheatre, a chapel and a small place for open-air exhibitions.

- 1 VIEWING TOWER
- 2 PIER
- 3 DRESSING ROOMS
- 4 BIKE RENTALS
- 5 INFO PAVILION
- 6 AMPHITHEATRE
- 7 GALLERY
- 8 HOTEL
- 9 CHAPEL
- 10 OBELISK



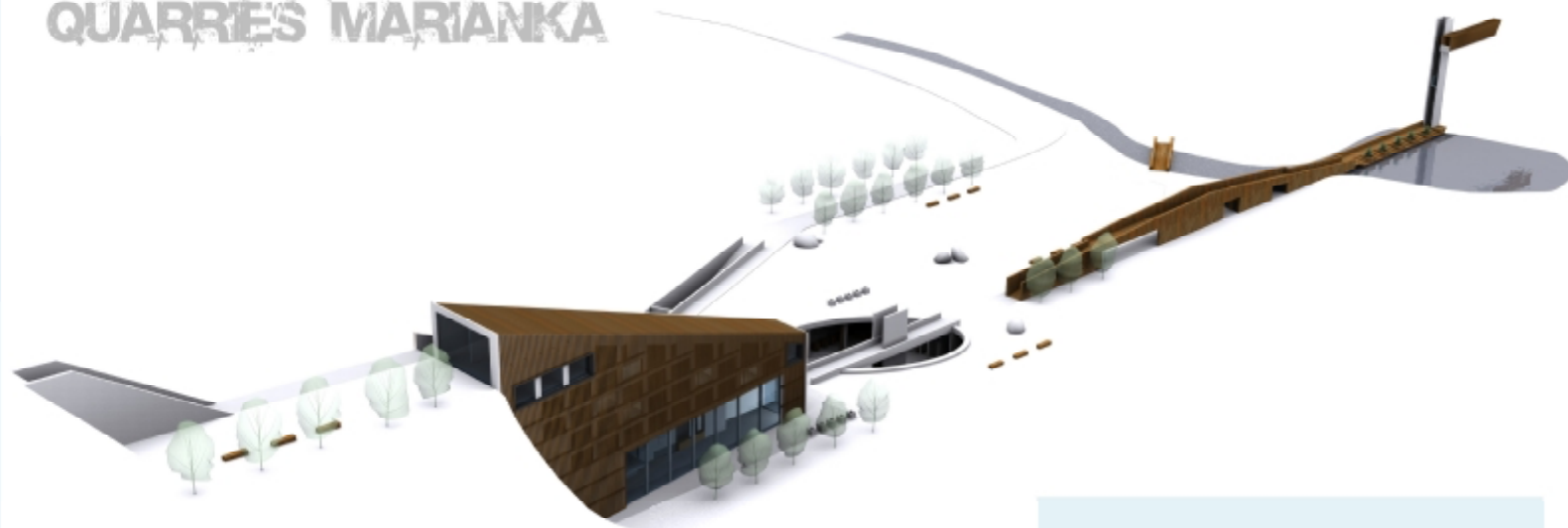
SITE PLAN

OVERVIEW

GROUND FLOOR

ELEVATION

QUARRIES MARIANKA



The line is basically the easiest way how to connect two points. Although, in this situation, the points are two vast quarries. If you lay a carpet on a floor it usually does not line up with the walls, it does not form a plane. It looks more like a layer with waves. If you make a section of this carpet you realize that some of the waves curl a lot. And if you trim the carpet from the other side you will have a long line of textile which seems straight from above and curled from the side. The line serves the idea perfectly. Being jagged and crooked it could contain all the necessary features and facilities.

PARTS OF THE ONE LINE

1. VIEWING TOWER

- concrete and timber, with glazed elevator,
- provides a detailed look at the smaller quarry and an overview of the whole area.

2. PIER

- timber structure serving as a base for the rock climbers,
- provides seating next to the still water in the smaller quarry

3. LOCKER ROOMS

- timber structure inside the LINE
- every rock climber or cyclist needs a place to get dressed and store things.

4. BIKE RENTALS

- timber structure inside the LINE

5. INFO PAVILION

- timber structure
- contains a library.
- Study tables are designed as a closed prism out of which 2 stools can be pulled.
- The pavilion will provide the necessary information about the area and the LINE.

6. NATURAL AMPHITHEATRE

- formed out of an old bank, covered with grass.
- serves as a stage for larger events and concerts.

7. GALLERY

- concrete and timber structure
- external auditorium, two interior galleries
- Gallery will be focused on the history of the village, mining in Marianka and the neighbouring natural reservation.

8. HOTEL

- insulated concrete structure with timber cladding and large main lobby
- accessible from the ground floor, sunken gallery or the top level.
- two level staircase, gym, 2 restaurants, large open space on the top level

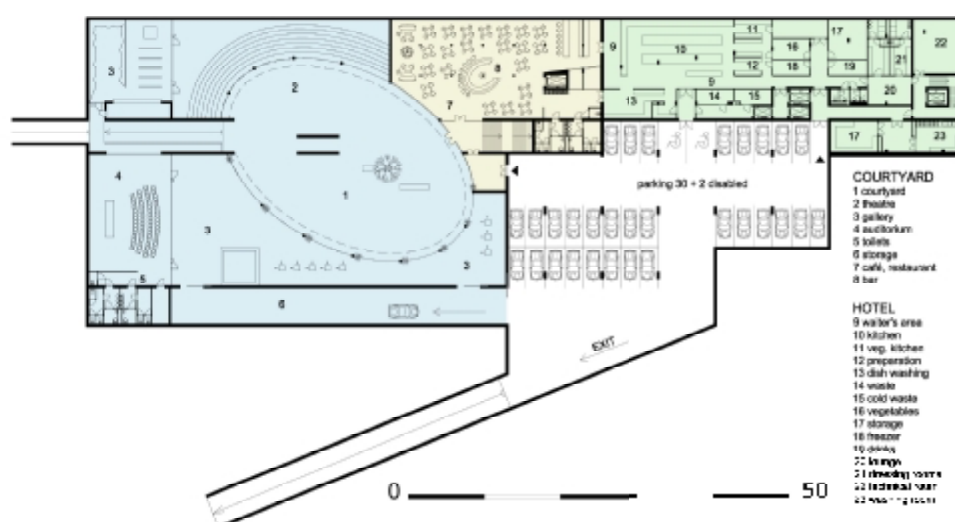
9. MEDITATION SPACE

- sunken concrete structure inside the large quarry
- could serve as place to stay, meditate or as another space to display art.

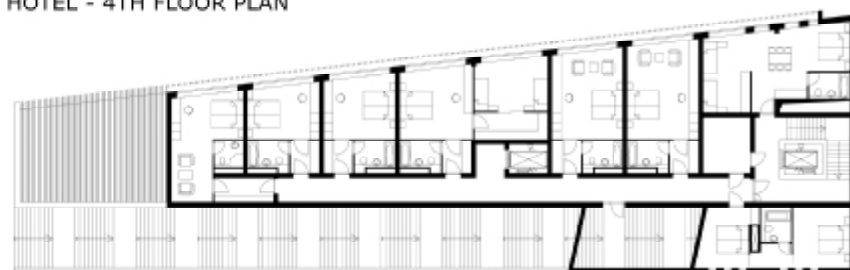
10. TWO OBELISKS

- on the highest level of the large quarry
- reflects the ancient history of this place, which was a Celtic settlement.

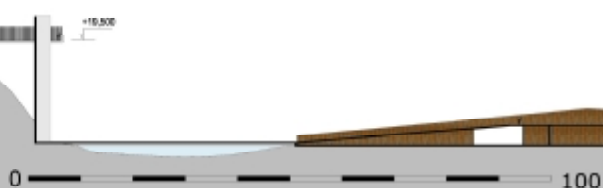
GALLERY & HOTEL - BASEMENT



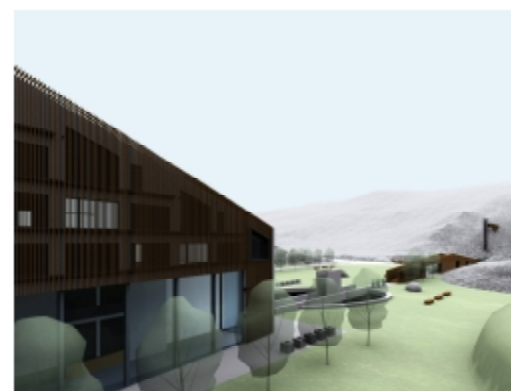
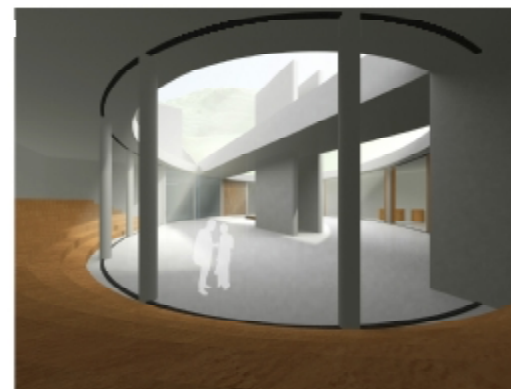
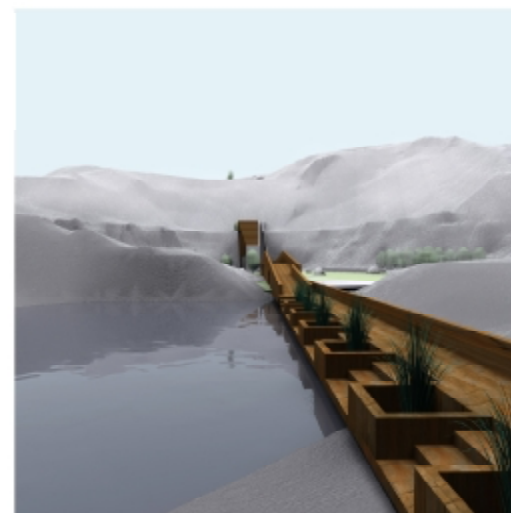
HOTEL - 4TH FLOOR PLAN



0 25



0 100



PER

INFO PAVILION

AUDITORIUM

GALLERY

HOTEL

ATELIER KNITL, STUPKA, LEBL
JAN VANECEK

